
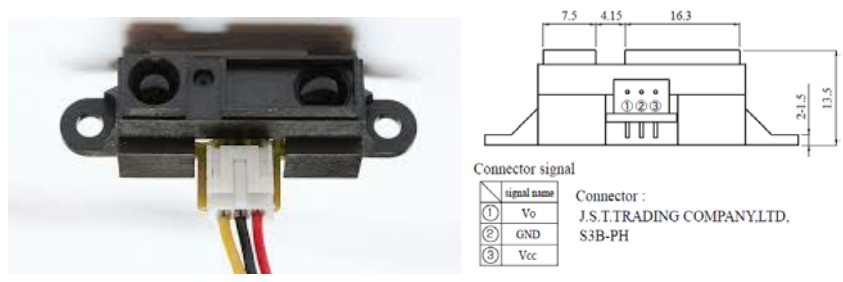


DISTANCE MEASUREMENT WITH SHARP GP2Y0A21YK0F

Required knowledge -

	Sharp sensors, sharp distance sensor, GP2Y0A21YK0F datasheet, infrared distance sensor
---	--

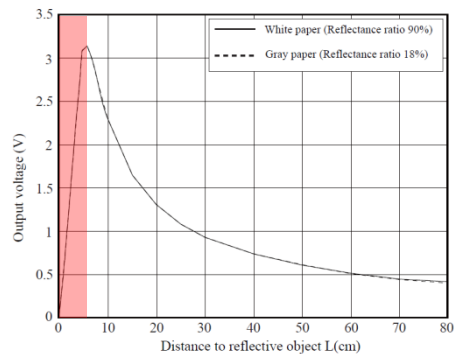


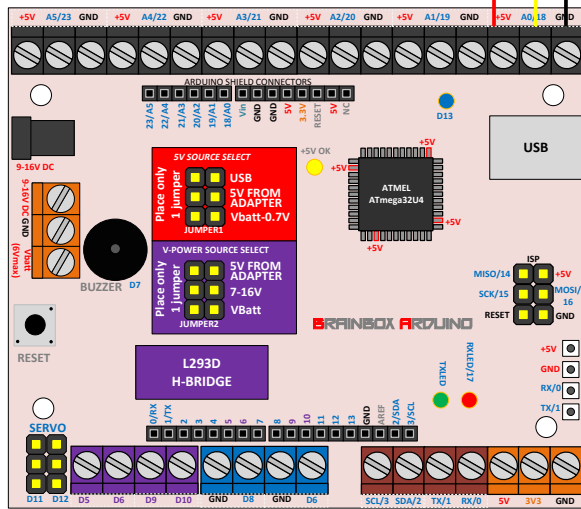
This distance sensor is from a family of distance sensors from Sharp. It has a built in processor and it can measure distances from 10-80 cm. This sensor is not linear, but it provides a voltage that indicates the measured distance (have a look at the graph).

Components:

SHARP GP2Y0A21YK0F	Farnell: 1243869 (+/-8€)
--------------------	--------------------------

1. This IR Sharp sensor needs a stable power supply between 4.5 and 5.5V to operate correctly.
2. Be aware to not measure distances below 7cm because this will return the same output voltages as distances over 7cm. (red zone)
3. The output voltage of this sensor is an analog voltage between 0.5 and 3V.





VOORBEELDCODE: 'I-AN'