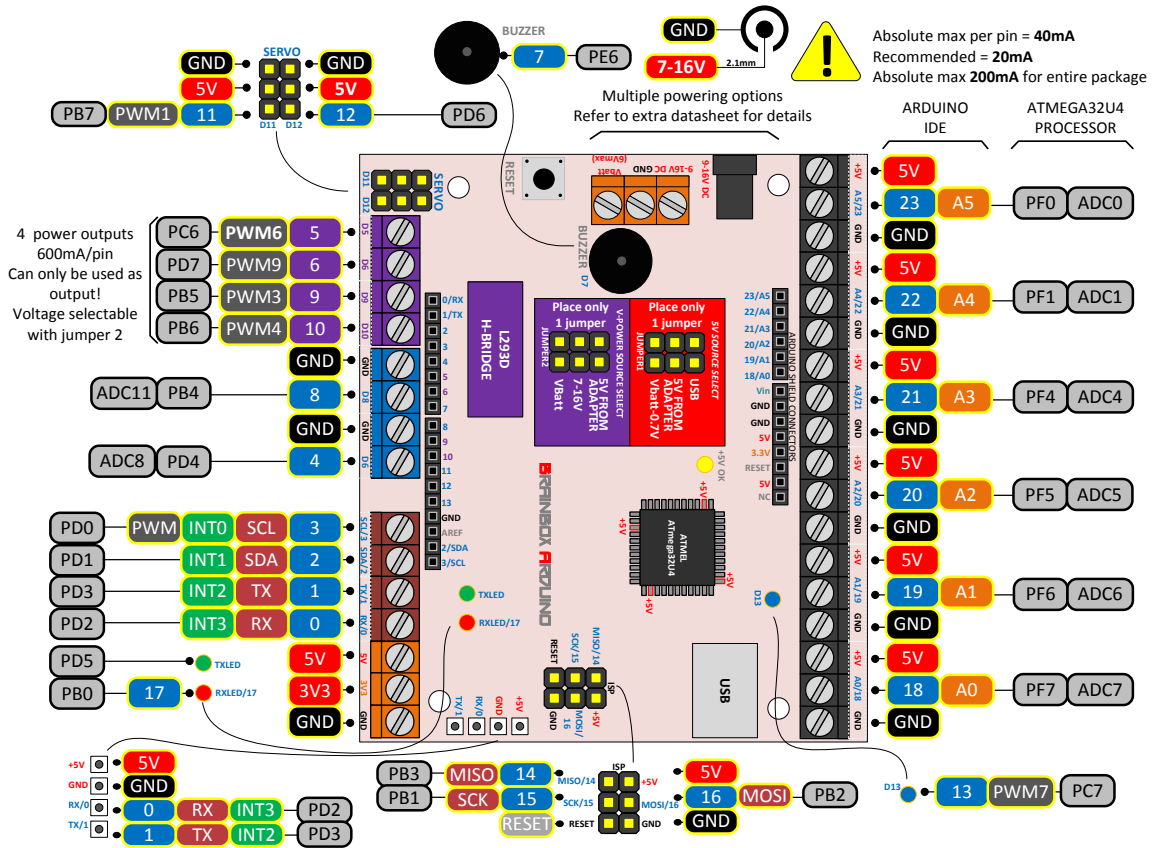






I-DIG – USING DIGITAL INPUTS ON/OFF TRUE/FALSE



All pins marked with this “  ” -symbol can be used as digital input pins.

Be aware that Arduino IDE uses a inconvenient way of naming the pins. The Arduino pin name is displayed in the  -symbol.

Flowcode and all the other programming languages use the official pin names. These official pin names are displayed in the gray rectangles: 

 are high power output pins and cannot be used as input pins.

General knowledge of digital inputs:

1. Input voltages that exceed 5.5V can damage the pin.
2. Voltages above 2Volt are read as a “1”
3. Voltages under 0.8V are read as a “0”

High	> 2V
Low	< 0,8V